

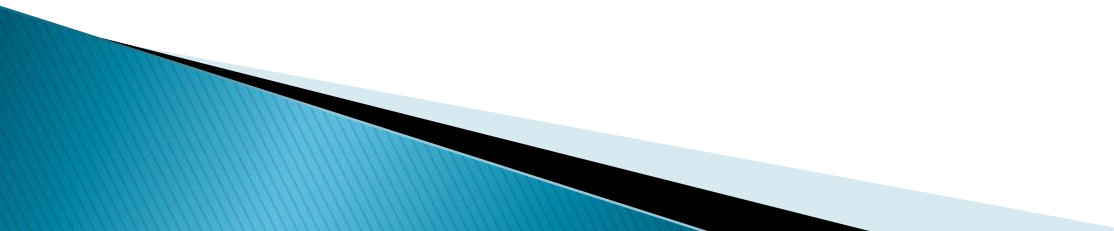
DEPARTMENT OF WATER RESOURCES

WATER STATISTICS, INCLUDING WASTE WATER

PRESENTED BY SAINABOU JAGNE



AGENDA

- ▶ Water Resources in The Gambia
 - ▶ Water withdrawal
 - ▶ Renewable Water Resources
 - ▶ Department of Water Resources
 - ▶ Meteorological Division
 - ▶ Hydrological division
 - ▶ Rural Water Supply Division
 - ▶ Water Quality Division
 - ▶ Waste Water
- 

WATER RESOURCES IN THE GAMBIA

AREA OF THE GAMBIA  11,295 km²

- ▶ SURFACE WATER
- ▶ GROUNDWATER



WATER WITHDRAWAL

Water withdrawal

Surface water source

Groundwater source

Total water withdrawal	31.8 10⁶ m³/yr
- Irrigation + livestock	21.3 10 ⁶ m ³ /yr
- municipalities	6.9 10 ⁶ m ³ /yr
- Industry	3.6 10 ⁶ m ³ /yr
per habitant	24 m ³ /yr
Surface water and groundwater withdrawal	31.8 10 ⁶

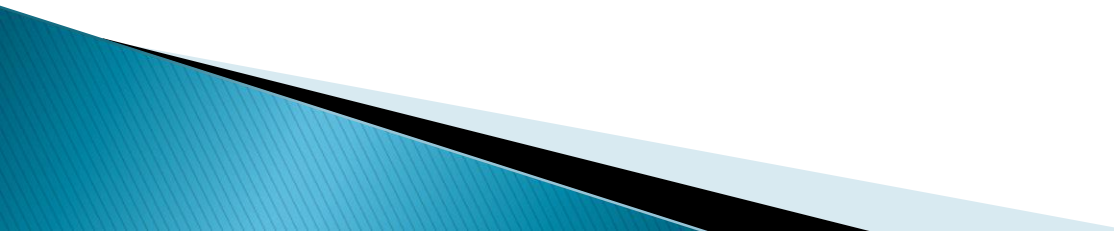
RENEWABLE WATER RESOURCES

Computation of long-term average annual renewable water resources in km³/year

Internal renewable water resources	
Surface water produced internally	3.0 km ³ /yr
Groundwater produced internally	0.5 km ³ /yr
Overlap between SW and GW	0.5 km ³ /yr
Total internal renewable water resources	3.0 km ³ /yr
External renewable water resources	
Surface water	5.0 km ³ /yr
Groundwater	Non recorded
Total external renewable water resources	5.0 km ³ /yr

DEPARTMENT OF WATER RESOURCES

5 Divisions:

- ▶ Meteorological division
 - ▶ Hydrological division
 - ▶ Rural water supply division
 - ▶ Water quality division
 - ▶ Data and communication division
- 


METEOROLOGICAL DIVISION

Meteorological division  monitor the weather and climatic conditions of the region.

PARAMETERS:

- ▶ Precipitation
- ▶ Temperature
- ▶ Atmospheric pressure
- ▶ Relative Humidity
- ▶ Evaporation
- ▶ Climatological data for prediction and analysis

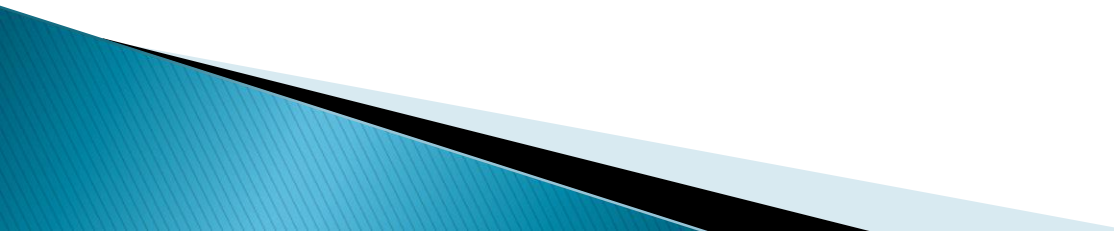
HYDROLOGICAL DIVISION

Hydrological division  monitors both surface water and groundwater bodies.



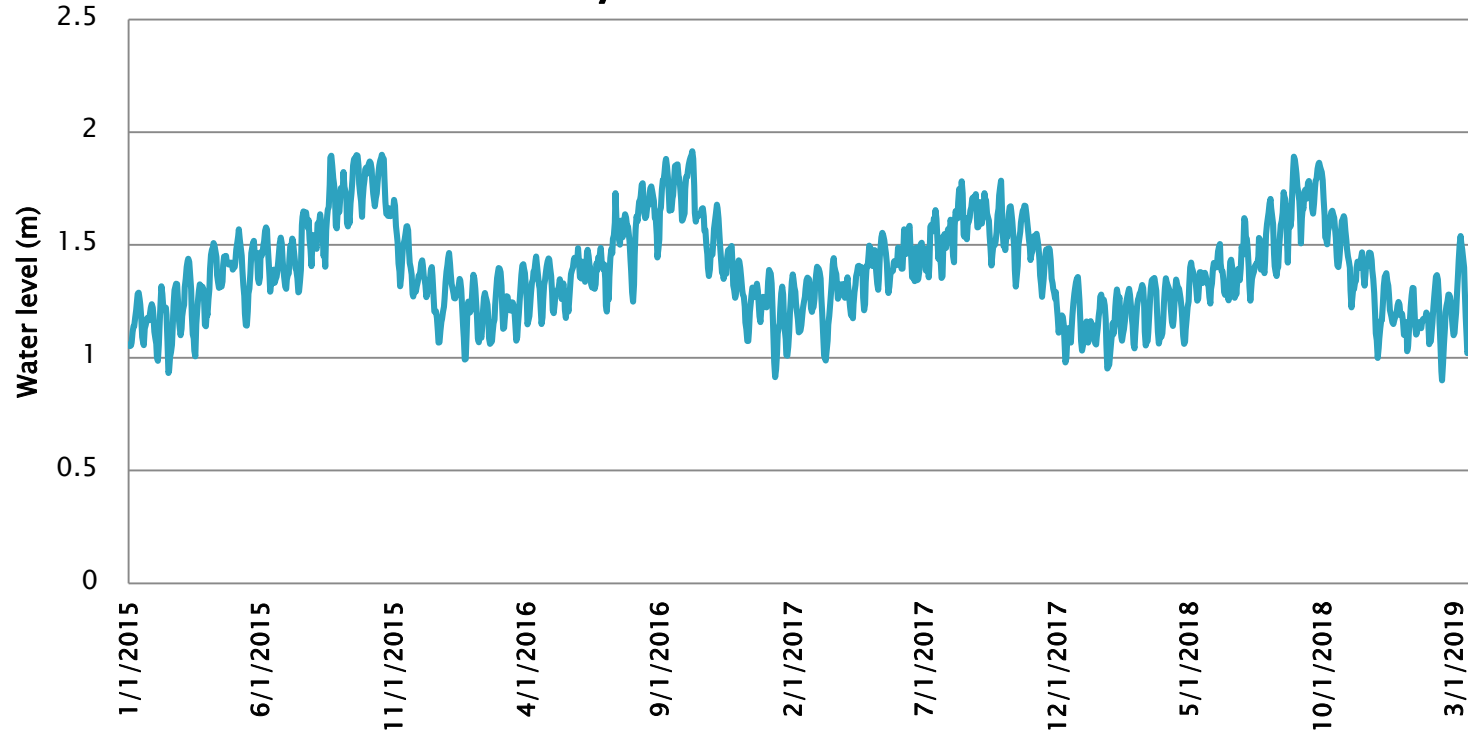
- ▶ Surface water stations
- ▶ Groundwater stations

PARAMETERS

- ▶ Water Level
 - ▶ Water Temperature
 - ▶ Salinity
 - ▶ Specific conductivity
 - ▶ Total Dissolved Solids
 - ▶ Supply voltage
- 

WATER LEVEL

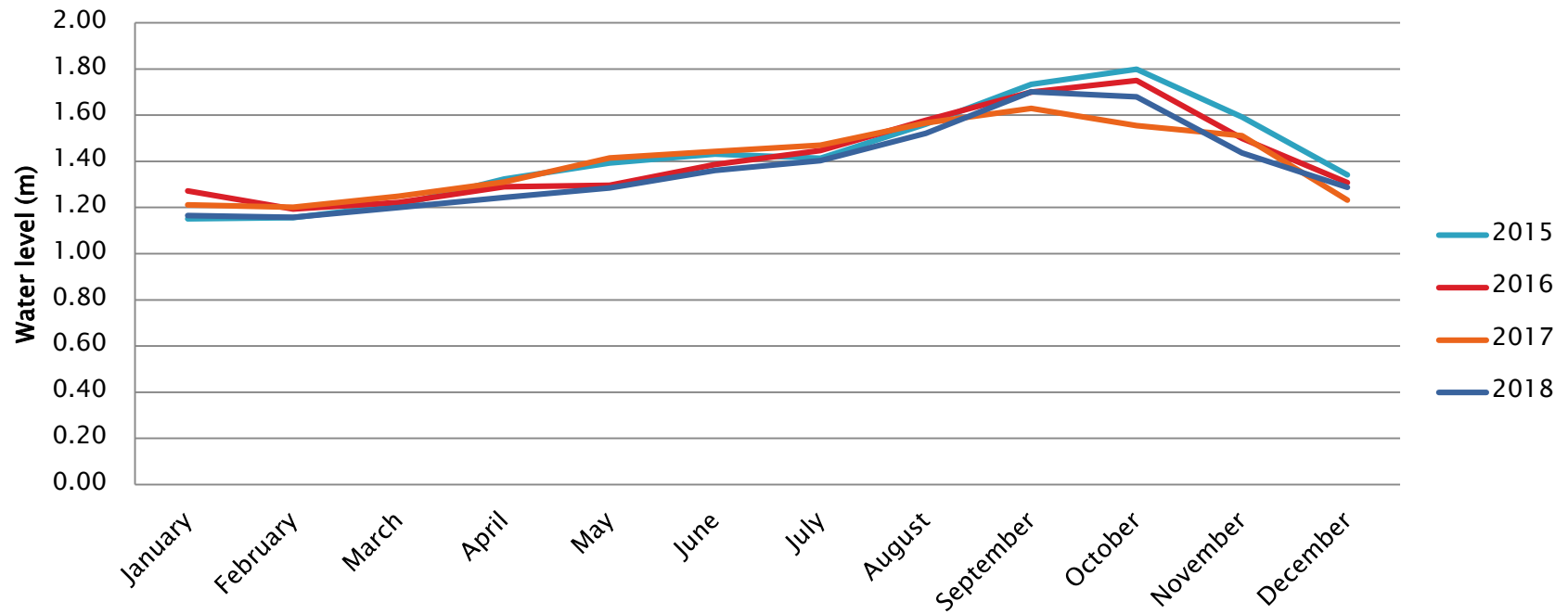
Mean Daily Water level 2014 – 2019



SURFACE WATER STATION – KUNTAUR

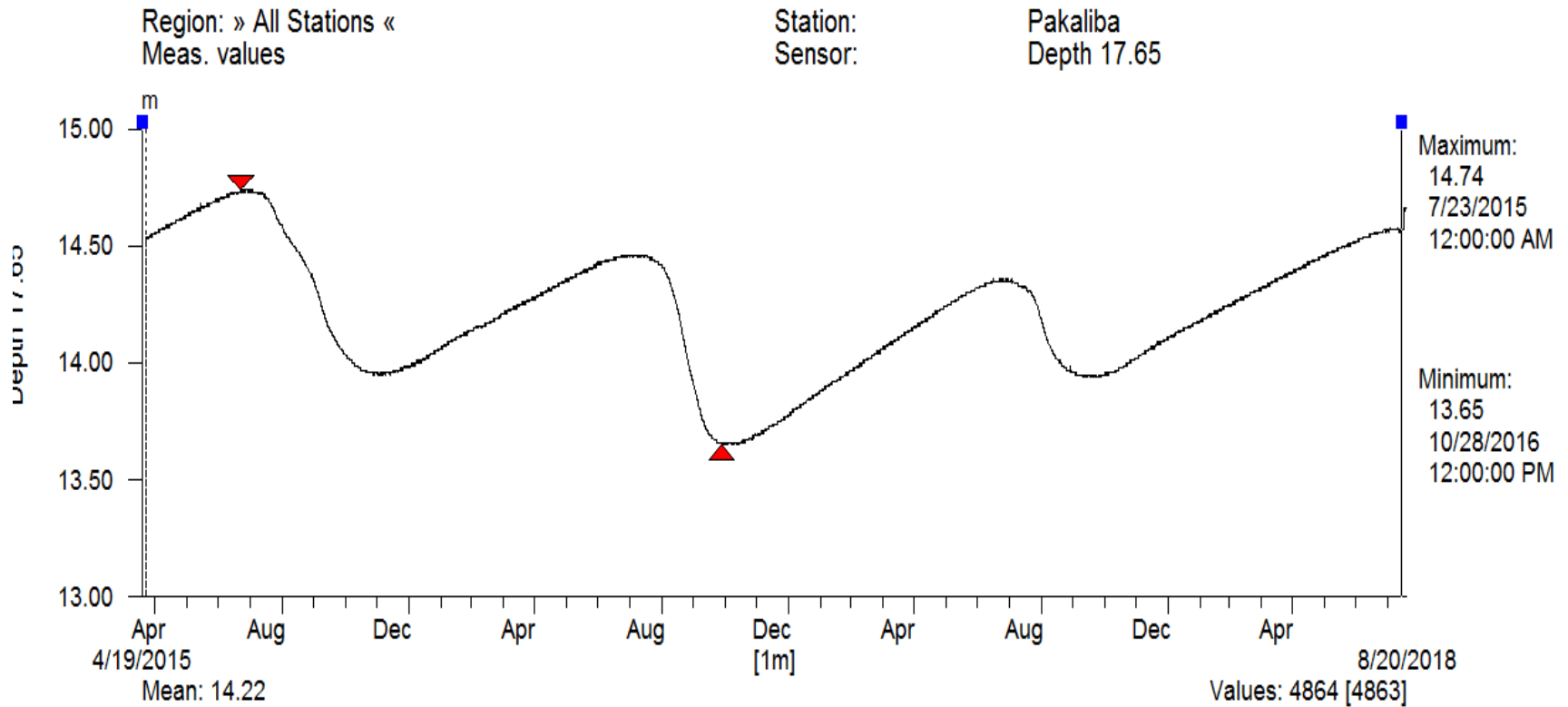
WATER LEVEL

Mean Monthly Water level



SURFACE WATER STATION – KUNTAUR

WATER LEVEL

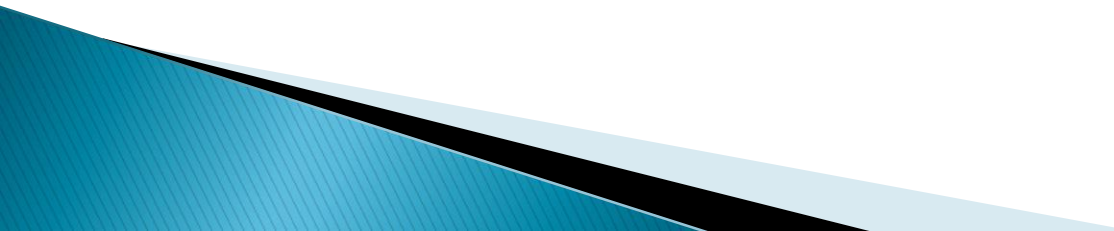


GROUNDWATER STATION – PAKALIBA


RURAL WATER SUPPLY DIVISION

RWSD  responsible for the provision of safe drinking water to rural communities.

RESPONSIBILITIES:

- ▶ Type of water sources
 - ▶ Age of system
 - ▶ Location of system
 - ▶ Ability to cover
 - ▶ Requirements for upgrade
- 

WATER QUALITY DIVISION

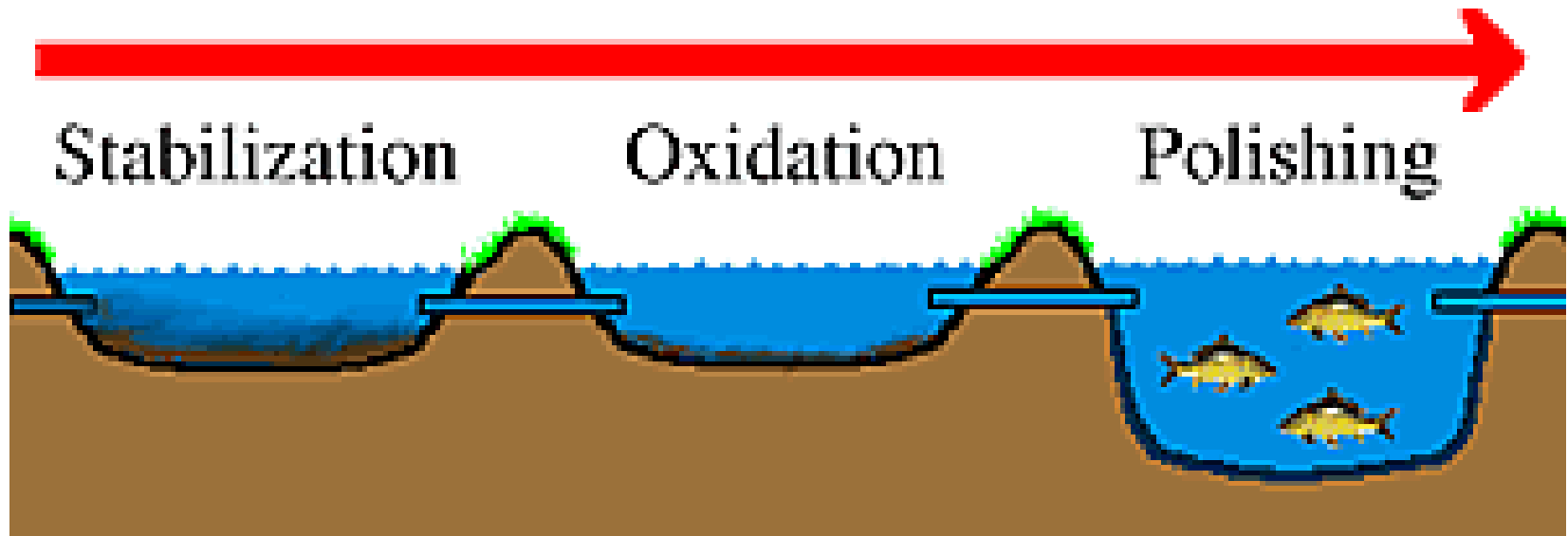
Water Quality Division  monitor the quality of water in the regions by collecting water samples and analyzing them in the lab.

There are 3 components in the analysis:

- ▶ Physicochemical
- ▶ Chemical
- ▶ Bacteriological or microbiological

WASTE WATER

- ▶ Treated municipal wastewater
- ▶ Not treated municipal wastewater





**THANK YOU FOR
YOU KIND
ATTENTION**

